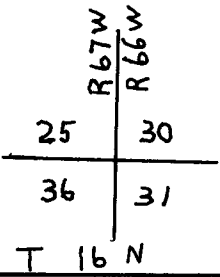


CERTIFIED LAND CORNER RECORDATION



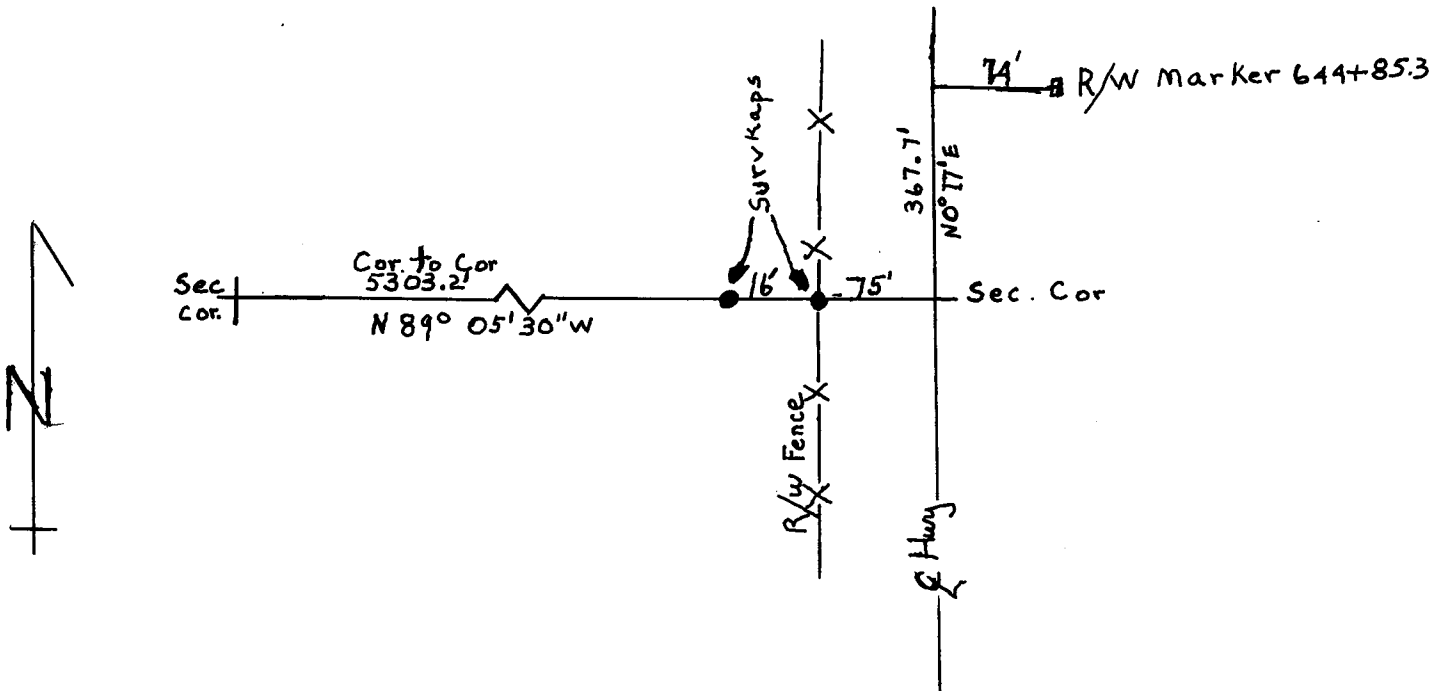
DESCRIPTION OF CORNER EVIDENCE FOUND, AND ORIGINAL RECORD (if known)

Corner located in Center of asphalt highway.
 I used the Highway Dept. Plans F.A.P. 144 (2), dated 1940,
 to reset corner as indicated on those Plans.

DESCRIPTION OF MONUMENT AND ACCESSORIES ESTABLISHED
 TO PERPETUATE THE ORIGINAL LOCATION OF THIS CORNER:

I set two #5 Rebars with Surv-Kaps along the North boundary of Section 36 as
 indicated on the sketch below.

SKETCH, WITH COURSE AND DISTANCE TO ADJACENT CORNER IF DETERMINED IN THIS SURVEY.
 (May Sketch or Paste Reproduction on Reverse Side.)



I, Edward C. Fry certify that I have carefully performed or reviewed the work
 done on the diagrammed corner as reported on this recordation form and approve the same.

Edward C. Fry Wyo# 662
 Signature of Surveyor Registration No.

STATE OF WYOMING,
 Office of Clerk and Recorder,
 County of Saranie

This "corner record" was filed for record on the 4 day of June, 1976, was noted
 on the cross-index plat and is assigned page No. _____, in book No. _____.

Jim C. Whitehead
 County Official

Cross Index No. <u>V 25</u>	T. <u>16</u>	R. <u>67</u>	Mer.
_____	T. _____	R. _____	Mer.
_____	T. _____	R. _____	Mer.
_____	T. _____	R. _____	Mer.
_____	T. _____	R. _____	Mer.
_____	T. _____	R. _____	Mer.
_____	T. _____	R. _____	Mer.

Photographed
 Indexed
 Posted
 Assessor

The State of Wyoming }
 County of Laramie } SS

This instrument was filed for record
 at 9:12 o'clock a. M. on the
4 day of June
 A. D. 19 1916 and duly recorded in
 book _____ on page _____

James C. Mitchell

County Clerk & Ex-Officio Register of Deeds
 By _____ Deputy